

Asanas Steam & Shower

Installation & User Instructions



Camio 820x820x2150

Prema 900x900x2180

Amor 1050x1050x2240

Jemini 1200x800x2250

Please read these instructions carefully before commencing installation.

Welcome to our range of Asanas steam showers.

Generally: -

All 4 models shown are covered by these installation instructions. Even though the shapes and sizes may be different, the basics of assembly are similar.

We have developed this range after many years of producing similar products and have tried to make the installation process as easy as possible. You will also find that we have pre-fitted the electronics water and waste connections to make installation as quick and simple as possible. *(Tip - the installer should always check that the water waste and electrical connections haven't been disturbed during transit and installation by fully testing the assembled unit.)*

The shower unit is generally delivered in two packages. One contains the shower-tray with removable panel and the shower-dome, and the other has the back-panel and ready assembled screen. **Important - the serial numbers on both packages should match otherwise the assembly holes will not line up**

It is preferable to remove the packaging from the back-wall and screen box outside. The two main components can then be separated and the shower doors can be removed from the screen. Moving the two main components is now much easier. *(Tip - be careful not to stress the back panel, for example, squeezing the ends closer together so that it goes through a gap easier etc., or the panel may be damaged, which is not covered by our guarantee.)*

The units are intended to be free standing and should be connected with the flexible connections provided - so that the unit can be easily pulled away from the wall if servicing is required. Similarly tiled floors etc. should continue under the tray to facilitate the unit being pulled out easily.

All the electrics are prefitted except for a couple of simple connections. Please note that the fan in the shower-dome sucks air into the unit and is not an extractor.

When assembling the back panel to the tray, apply a bead of silicon along the line of the connection holes before connecting - the units have been dry assembled in the factory so all the holes should line up.

We have kept the water controls as simple as possible and you will note that there are no solenoid valves that we have found from experience cause too much flow restriction and can be unreliable. We use a brass bodied thermostatic valve, flow control and diverter with proven long term reliability. (high pressure @ 1-3bar suitable for combi boilers or similar) As with all shower valves the hot and cold water feeds should be balanced for pressure - and it may not work properly if mains cold has not been properly regulated with a pressure reduction valve. On many modern combi-boilers both the hot and cold pressures are regulated so there is no problem. On low pressure installations, a 2.5 or 3 bar twin impeller pump will be required. The pump is generally situated at the side of the copper cylinder and will pump a dedicated feed from both the copper cylinder (hot) and the cold water tank (cold). Don't forget to take out the non-return valves from the hot and cold inlets on the back of the thermostatic valve on low pressure installation.

Note that the thermostatic valve is not designed to work with 'pumped hot' in combination with 'mains cold' as balanced pressures cannot be achieved.

The steam generator has an after-use drain-down function to mitigate the effects of limescale build up. The generator may still be eventually damaged by limescale and it is a good idea to fit an anti limescale device. Otherwise periodic descaling maintenance is recommended.

TOOLS REQUIRED:

Spirit Level - Grips

Adjustable Spanner

Cross-head screwdriver

Bathroom suitable silicone sealant
(clear coloured recommended)



Contents List

Box 1: -



Back Panel



Door Frame
inc. sliding doors

Including fitted



Steam Generator



Command Unit

Box 2: -



Lid, overhead shower/light
speaker and fan.



Tray, Front panel
and fitted waste.

Including: -

Fixing Pack

12 x Nuts – Bolts – Washers

19 x 15mm Screws

1 x 20mm Screw

3 x Grip Clips

1 x Shower Handset & Hose

1 x Pair of Door Handles

1 x Remote Control Unit

Before unpacking any components check the packaging of all boxes to ensure that the serial numbers match.

Unpack all the components ensuring that everything listed is included and there is no apparent damage.

The manufacturers will not accept any liability for damage reported after installation has commenced.

Please ensure that the technical specifications regarding supplies have been referred to prior to commencing installation.

Read these instructions thoroughly before you begin installation.

Position The Shower Tray

Level the tray by adjusting the height of the feet considering the clearance required for the waste trap.

Secure the height by tightening the locking nuts.

Ensure the waste trap is secure and water tight, and hasn't been disturbed in transit. Connect the flexible waste outlet pipe ensuring the rubber O ring is in place. The flexible pipe must not be kinked or form an inverted U shape when in its final position.



The front skirt of the tray is removable to allow access to the underside of the tray at any time. Simply remove the chrome cover caps and undo the 3 screws.



Fix The Back Wall

Run a constant thick bead of silicone sealant along the surface of the tray where the wall section will sit and around the predrilled fixing holes.

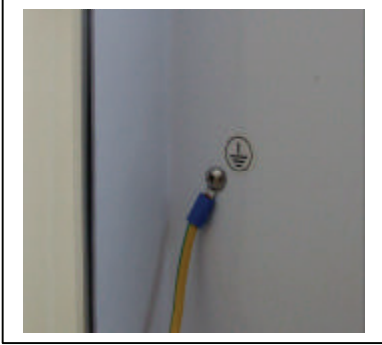


Position the wall section on the tray and secure using 6 x nuts, bolts and washers. At this stage, finger tighten only.

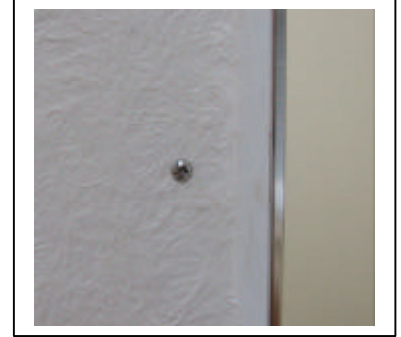


Fix The Doorframe

Run a constant thick bead of silicone sealant along the surface of the tray where the doorframe will sit. Run a constant thick bead of silicone sealant up the wall section where the doorframe will join, and around the predrilled fixing holes.



Secure the Doorframe to the wall section using 14x 15mm screws. At this stage, finger tighten only.



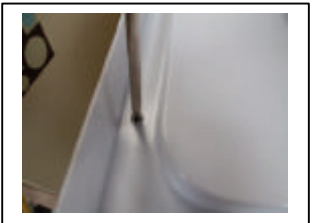
Secure the doorframe to the tray using 1 x 20mm screw.



Fix The Lid

Secure the lid to the wall section using 6x nuts, bolts and washers.

Secure the lid to the doorframe using 5 x 15mm screws.



Now tighten all screws and bolts on the rear of the wall section.

Fix the door handles and connect the shower handset and flexible hose. Ensure a rubber washer is placed in each end of the hose before connecting.



The Steam Generator & Command Unit

Make all relevant connections to the Steam Generator.

(On some models most of the connections are already made)



Secure the earth bonding cable to the back wall section as indicated.

Connect the Water Inlet pipe ensuring there is a rubber washer in place.



Connect the Steam Outlet pipe ensuring there is a rubber washer in place.



Connect the Steam Drain-down pipe, via hole in tray, securing at each end with a grip clip.

Command Unit



Make all relevant electrical connections.

This will include:

- Control Panel
- Over head light
- Recirculation Fan
- Speaker



Position the temperature probe and extend the aerial cable.



Connect the power supply cable to the junction box.

Connect the flexi-waste pipe to the 40mm waste.

Connect the hot and cold braided pipes to the water supplies ensuring there is a rubber washer in place.

These connections must be the correct way round as incorrect connections will affect the operation of the thermostatic control.

Ensure that the open water supplies are flushed through prior to making these connections to clear any debris.

Allow a suitable amount of time for the sealant to cure (specified by the sealant manufacturer) before using any water functions for the first time.

Turn the water and power on and make a full test of the unit prior to pushing into position to ensure there are no leaks at the rear, checking all connections.

Pushing the base only so as not to compromise the seals, push the unit into position.

Make a further test when in position to ensure the flexible waste pipe, and therefore the drainage, has not been affected. Also check that the flexible water connection pipes are not kinked and that the flow of hot and cold water to the shower work correctly .

IMPORTANT NOTICE

This unit should be installed by qualified installers in accordance with current legislation and bylaws.

Installers

Please read **INSTALLATION INSTRUCTIONS / COMMISSIONING INSTRUCTIONS** before commencing work and ensure that all components are correct and undamaged. (We do not accept claims for loss or damage once installation has commenced).

Maximum pressure – 3 bar,

Please ensure that access is available should servicing be necessary in the future.

Ensure that all factory fitted components are secure and watertight and electrical connections are made in accordance with current I.E.E. Regulations.

Fitting a water softener in hard water areas is advised to avoid damage to the steam generator.

User

Please read the user instructions and familiarise yourself with the unit's controls and functions.

Our Customer Service Help Line 0113 239 4447 will be pleased to assist with any problems that you may have.

If your unit is fitted with steam, please exercise caution and always ensure that children are not allowed to use it unsupervised.

Guarantee

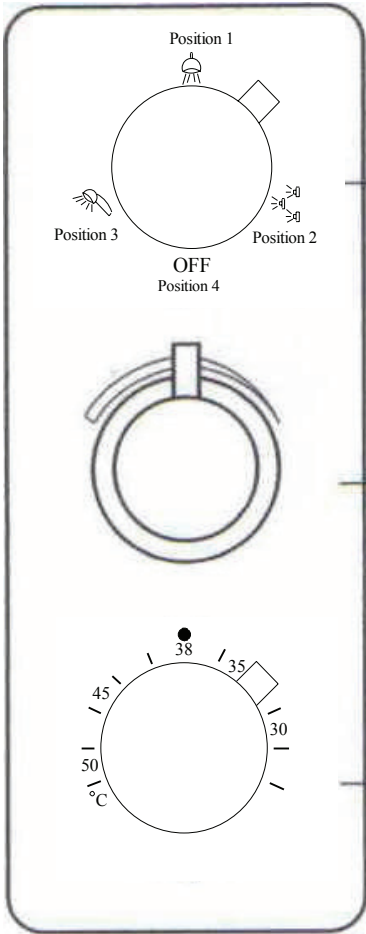
3 years parts and 12 months labour from date of purchase for latent manufacturing or material defects for domestic installations.

Excluded are defects caused by faulty installation, normal wear and tear, accidental damage or misuse.

Should a guarantee claim require an Engineer call out, 'proof of purchase' will be required and there will be a charge of £150 payable in advance that will be refunded in full when the claim is substantiated.

Full access should be available for service or repair – we cannot be responsible for removal of other bathroom equipment, furniture, fittings or finishes or any consequential loss or damage there to.

User Guide



Valve Assembly

4 Way Diverter:
 Position 1 – Overhead Shower
 Position 2 – Bodyjets
 Position 3 – Handheld Shower
 Position 4 – Off / Steam*

Flow Control:
 Water On / Off
 *Water must be turned on to operate the steam function – other shower functions may be selected and used in conjunction with the steam.

Thermostatic Control:
 Range from ambient cold to 50C
 Safety lock @ 38C with manual override up to 50C

Steam Outlet

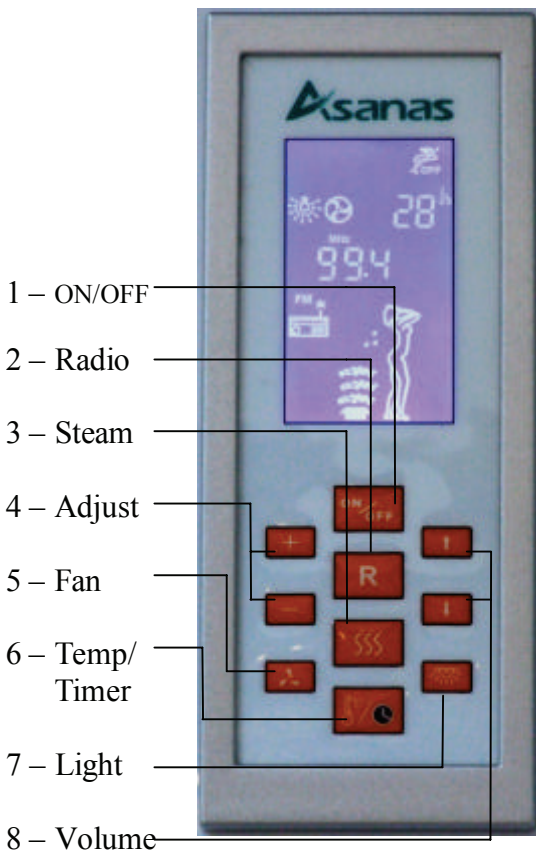


To use the steam normally turn the diverter to the top outlet.

Pull out the bottom drawer to apply aromatherapy oils and turn the diverter to the bottom outlet

Exercise caution when using steam and do not allow younger children unattended access.

Control Panel



The display will show relevant icons when various functions are active, along with the ambient air temperature.

1 - Press to activate or deactivate standby mode

When using the radio:

- 2 - Press to activate or deactivate the radio
- 8 - Press to increase / decrease the radio volume
- 4 - Press to adjust the radio frequency (press for 2 seconds to start automatic search)

When using the steam function:

- 3 - Press to activate or deactivate the steam function
- Please note: Water must be turned on when using the steam function. A warning symbol will appear in the top right of the display if the water is not turned on.**
- 6 - Press once and the steam cut off temperature can be set by using the +/- buttons (default setting is 40C)
- 6 - Press twice and the steam cut off timer can be set by using the +/- buttons (default setting is 20 minutes)
- 5 - Press to activate or deactivate the fan
- 7 - Press to activate or deactivate the light